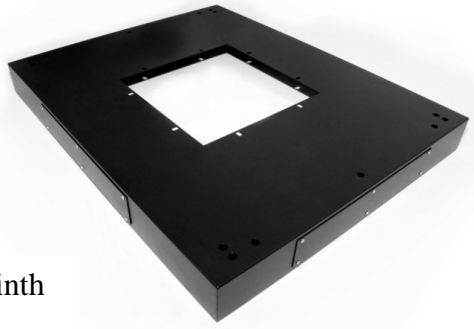


## Accessories

Standard and Pochin manufacture a wide variety of accessories to complement our product line.

### Plinths

A base plinth for the range of standard cabinets. The base plinth provides a 100mm high base to provide a fixed base for the cabinet and provides a working space under the cabinet for cables.



Plinth

### Ordering Information:

Height	600 x 600	600 x 800	600 x 1000	800 x 800	800 x 1000
100mm	PL66	PL68	PL61	PL68	PL81



Front mounted shelf



Vented shelf

### Shelves

Standard and Pochin offer a number different type of shelves to suit different applications and fixing arrangements in 19 inch cabinets. Modem Shelves fit only to the front mounting angles of a cabinet and are best suited to applications where the components to be placed on them are

Telescopic shelves offer a much higher load capacity and are well suited to server applications where the product is heavy and it is better to move it clear of the cabinet before it is lifted. Vented shelves are fixed to the front and rear mounting angles in a cabinet and provide a medium weight load capacity.

To facilitate the positioning of cables in the plinth each side has a removable plate, which can be used as a cable gland or for access.

Description	200mm deep	300mm deep	350mm deep	400mm deep	500mm deep
1U Front mounted shelf	FMS1200	FMS1300			
2U Front mounted shelf			FMS2350	FMS2400	FMS3500

Standard & Pochin  
Units 7,8,9  
Dawkins Road  
Poole BH15 4JP  
England

t: +44 (0) 1202 677244  
f: +44 (0) 1202 679762

w: [www.standardcabinets.co.uk](http://www.standardcabinets.co.uk)  
e: [cabinets@mvm-uk.com](mailto:cabinets@mvm-uk.com)

# Accessories

## Shelves

### Telescopic shelf

Size	Order code
450mm deep	TS 450
570mm deep	TS 570
720mm deep	TS 720

### Vented shelves

Size	Order code
450mm deep	SVS 450
570mm deep	SVS 570
670mm deep	SVS 670
740mm deep	SVS 740
	840

## Blanking Panels

Use to seal unused areas or hide unsightly cable at the rear of enclosure within the 19 inch mounting level.

### Blanking Panel



Size	Order code
1U Blank Panel	BP1
2U Blank Panel	BP2
3U Blank Panel	BP3
4U Blank Panel	BP4
6U Blank Panel	BP6

## Brush Strip Panels

A pair of 19 inch front panels, which are designed to allow cables to be passed from the front to the back of the cabinet or vice versa. The brush strip helps ensure that cables are not damaged when passed through the panel and also reduces the amount of dust that enters the cabinet. Manufactured in 1.5mm steel and available in 1u and 2u heights.

### Brush strip panel



### Ordering Information:

Size	Order code
1U	BSP 1
2U	BSP 2

Standard & Pochin  
Units 7,8,9  
Dawkins Road  
Poole BH15 4JP  
England

t: +44 (0) 1202 677244  
f: +44 (0) 1202 679762

w: [www.standardcabinets.co.uk](http://www.standardcabinets.co.uk)  
e: [cabinets@mvm-uk.com](mailto:cabinets@mvm-uk.com)

## Castors, Feet, Baying Kits, Earth Bonding and Front Panel Fixings

Cabinets are fitted with “transit” castors. Should a heavier duty castor be required or the cabinet needs to be fitted to an uneven floor then these can be ordered as accessories. Both items are available in packs of four. The “heavy duty” castors have two “braked” and two un-braked castors in each pack.

Front panel caged nuts and screws are used to fix front panel components into 19inch cabinets.

Cabinet baying kits fix two or more cabinets side by side. This requires that the cabinet side panel(s) are removed.

Earth bonding kits provide sufficient leads for all the panels on a cabinet to be bonded to the main frame. A pair of 19 inch front panels, which are designed to allow cables to be passed from the front to the back of the cabinet or vice versa.

Castors, feet, baying kits, earth bonding and front panel fixings



### Ordering Information:

Size	Order code
Heavy duty castor (pack of 4)	HDC 4
Earth bonding kit	EBK
Jumper ring - 70 x 70mm for use with 800mm wide cabinets	JR 7070
Jumper ring - 100 x 90mm	JR 1090
Baying kit	BK 1
Adjustable feet	AF 4
Front panel screws and cage nut (pack of 50)	CN 50

Standard & Pochin  
Units 7,8,9  
Dawkins Road  
Poole BH15 4JP  
England

t: +44 (0) 1202 677244

f: +44 (0) 1202 679762

w: [www.standardcabinets.co.uk](http://www.standardcabinets.co.uk)

e: [cabinets@mvm-uk.com](mailto:cabinets@mvm-uk.com)